



- [About us](#)
- [Quality & Service](#)
- [Our vision](#)
- [Contact](#)
- [References](#)



# ABOUT US



## **Mariparts BV originated from Crownersteel, which was founded in 2012.**

In 2015, a conscious decision was made to broaden the range and with that expansion, a new name and a new appearance were chosen, but with the same craftsmanship and the same service. In addition to steel items, Throughout the years we have managed to take upon bigger projects as we improved our qualitative and operational skills, processes and standards through experience.

Mariparts BV (MRP for short) is a high quality specialist in fabrication of special custom made heavy duty steel structures for the off-shore Industry, mob- and demobilizations of off-shore barges, fabrication and installation of sea-fastenings, piping, conversions and repairs. Purchasing, sales and Services department.

## **Lifting oversize and overweight components**

Our crews specialise in lifting wind turbine components. We move and place these heavy, high-value objects with care and precision, safeguarding the asset as well as the crew on site.

## **Move projects forward**

Heavy cranes are essential for the installation and maintenance of wind turbines. Projects can easily be delayed if cranes or crane operators aren't

available at precisely the right time. Mariparts provides technical expertise in both cranes and wind turbines. By directly managing both services, we're able to simplify communication and project management. Our complete project delivery is safe, efficient and cost-effective.

## **We are heavy lifting experts for wind farms**

Our experienced crane operators and riggers have worked on wind farms throughout North America, Europe and the world. With this training and experience, they've gained specialised skills in lifting and placing turbine components, as well as assisting with installation. Our team of riggers ensure that each lift is completed safely and efficiently.

## **Heavy cranes experts in large scale**

At Mariparts, our crew has expert technical knowledge of all large-scale heavy cranes, including telescopic and lattice boom cranes, as well as all-terrain and crawler cranes. With in-house capabilities to move and maintain each crane, we're able to deliver projects more efficiently.





# QUALITY & SERVICES



## **Differentiating**

Quality and speed of delivery in normal circumstances are among other things the elements which can differentiate you from the rest. As no other we find quality and efficiency very important, whereas safety is always no. 1. This shows through the confidence our clients have put in us by providing us projects where we can show our core competencies over and over again.

## **The extra mile**

Mariparts is a company which goes the extra mile in order to serve its clients. In agreement with the client Mariparts provides complete documentation via compiled databooks which enable the client to revise all elements of the scope of work of a particular project from A-Z.

## **Additional services**

Additional services like revision of technical CAD/ PDF drawings are provided to make sure that for example all measurement, sizes and weights are correct prior to starting the project.





# OUR VISION



Our vision is to stay true to our specialization and what we are good at. The focus on our core business enables us to deliver the expected top quality that our customers are looking for. Not big stories, but true stories that characterize our experience and dedication to projects in our industry.

*We see changes in the world.*

Energy has always been necessary, Sustainable and green, we are all aware of that now. We pass the world on to new generations. Due to shortcomings of good staff and professionals in the new energy market, where there is now a serious shortage. Mariparts switched to that early on. By training all our technicians to higher standards.

## **Full turbine installation safely and efficiently**

Our expert team installs wind turbines in onshore and offshore locations. We construct new windfarms, expand existing facilities and replace turbines that are ready to be decommissioned.

## **End to end Installation and project delivery**

As technology continues to advance, wind turbines are growing rapidly in size. Larger blades and increased heights make it increasingly important to engage skilled professionals to install your turbines. Our installation team includes a mechanical team and finishing team. Many of our experienced technicians have worked on the biggest wind farms in Europe such as Markbygden 2 (Enercon) Nysater 1&2 (Nordex) and many more.

We also have our own heavy crane expertise, with teams specially trained to lift wind turbine components. With these capabilities at hand, Mariparts Wind can minimise downtime and ensure every project stays on schedule. We work closely with wind farms and turbine manufacturers to ensure your project runs smoothly from start to finish.





# OUR VISION

## Our service delivery includes:

- Ofloading of the components
- Preparation of each turbine components
- Erection of structures
- Component installation and mechanical completion
- Punch list

## Ongoing support for operations and maintenance

Mariparts also provides operational support including:

- Inspections
- Maintenance and repairs

## No nonsense

We recognize that reputation, responsibility and integrity are the cornerstone of our existence, realizing that our future is shaped by our performance and behavior today. That is why we attach great importance to long-term relationships with customers, employees and suppliers. We are a team that shares and believes in our vision.





# CONTACT

## Perry Goudswaard

+31 6222 83 009

+31 10 76 00 263

sales@mariparts.com

www.mariparts.com

## Mariparts B.V.

West voorstraat 8

3262 JP Oud Beijerland

The Netherlands

BTW: NL855644795 B01

IBAN: NL24 RABO 0306 823233

KvK: 64385345

EORI: NL855644795



# PEINEMANN

RENTAL - SALES - SERVICES

## PEINEMANN MOBILIFT GROUP

- Family owned company
- One stop shop philosophy
- Active in 13 countries
  - Head quarter in Hoogvliet, the Netherlands
- 900+ employers world wide
- Amount of rental units: 5.000+



## HIGH LEVEL SOLUTIONS PEINEMANN.NL





## LIFT TRUCKS

SINCE 1954

LIFT TRUCKS AND WAREHOUSE EQUIPMENT. [PAGE 6](#)

## CRANES

SINCE 1975

MOBILE HYDRAULIC CRANES AND HEAT EXCHANGER BUNDLE EXTRACTORS. [PAGE 10](#)

## EQUIPMENT

SINCE 1980

BUNDLE EXTRACTORS, BUNDLE LIFTERS AND BUNDLE CLEANERS FOR THE PETROCHEMICAL INDUSTRY. [PAGE 16](#)

## ACCESS EQUIPMENT

SINCE 1997

AERIAL WORK PLATFORMS, TELEHANDLERS, ROUGH TERRAIN TRUCKS, SCAFFOLDS AND SUSPENDED WORK PLATFORMS. [PAGE 20](#)

## CONTAINER HANDLING

SINCE 2009

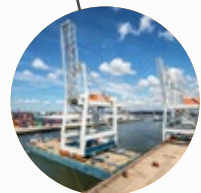
IMPORTER OF SMV (KONECRANES) HEAVY LIFT TRUCKS, EMPTY CONTAINER HANDLERS, REACH STACKERS AND TERBERG TERMINAL TRACTORS. [PAGE 24](#)

## PORT SERVICES

SINCE 2014

PORT PROJECTS, PORT MAINTENANCE AND PORT CONSULTANCY. [PAGE 28](#)

  
**PEINEMANN**  
RENTAL · SALES · SERVICES



## HANGCHA LIFTING SOLUTIONS

SINCE 2012

IMPORTER OF HANGCHA LIFT TRUCKS. [PAGE 32](#)



## CARER LIFTING SOLUTIONS

SINCE 2013

IMPORTER OF CARER LIFT TRUCKS. [PAGE 36](#)



## SPIJKSTAAL INTERNATIONAL

SINCE 2015

ELECTRIC TOW TRACTORS AND PLATFORM TRUCKS. [PAGE 40](#)



## G. VAN HARTEN

SINCE 1986

MAINTENANCE, INDUSTRIAL ASSEMBLY & REPAIR. [PAGE 44](#)



## MOBILIFT INTERNATIONAL

SINCE 2008

ALL OVER THE WORLD. [PAGE 46](#)

# CRANES

## Rental

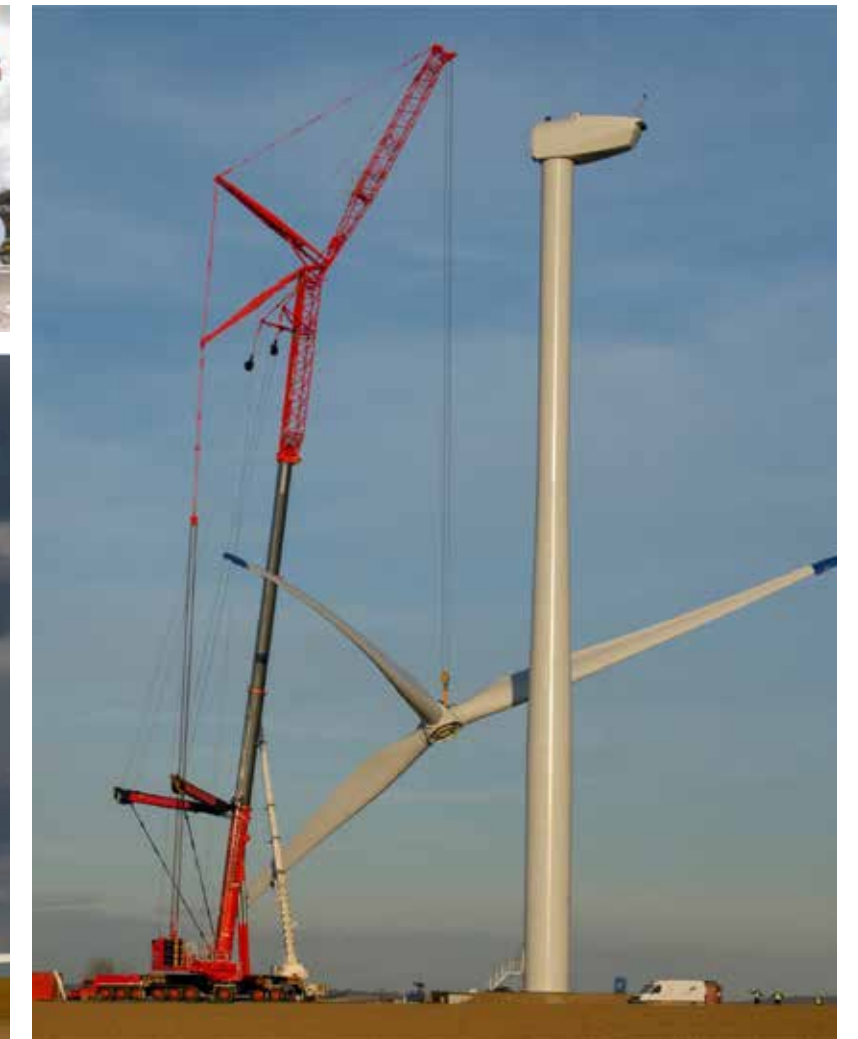
- Crawler Cranes
- Telescopic Cranes
- Mobile Tower Cranes
- Specials
- Bundel Extractors

## Services

- Labour
- Engineering
- Skidding activities &
- Industrial movement



# PEINEMANN WIND





# REFERENCES

Project name	Country	Client	Type of WTG	Hub Height	Amount	Main Crane
Portes de Champagne	France	Senvion	MM 92	HH 80	6	LR 1350
Beau Regards	France	Senvion	MM 82	HH 80	1	LR 1350
Kerles	France	Senvion	MM 92	HH 80	2	LR 1350
Hauts de Conges	France	Senvion	MM 92	HH 100	2	LR 1350
Airaines	France	Senvion	MM 92	HH 78,5	6	LR 1350
Clamecy	France	Senvion	MM 92	HH 80	6	LR 1350
Radenac	France	Senvion	MM 92	HH 100	4	LR 1350
Pays de Retz	France	Senvion	MM 92	HH 80	6	LR 1350
Poperinge	Belgium	Senvion	MM 92	HH 100	4	LR 1350
Courgis	France	Senvion	MM 92	HH 80	6	LR 1350
Venoy Beine	France	Senvion	MM 92	HH 80	6	LR 1350
Chaurse	France	Senvion	MM 100	HH 100	8	LR 1600
Arlon	Luxembourg	Senvion	MM 100	HH 100	6	CC 3800
Asse-Mollen	Belgium	Senvion	MM 100	HH 100	4	LR 1600
Coevorden	Netherlands	Vestas	V 90	HH 105	3	LR 1750
Tessenderlo	Belgium	Vestas	V 90	HH 105	1	LR 1600
Zeewolden	Netherlands	Senvion	3 XM	HH 104	1	LR 1350
Renneville	France	Senvion	MM 92	HH 100	5	LR 1350
Frans	France	Senvion	MM 100	HH 100	1	LR 1350
Geel	Belgium	Senvion	MM 100	HH 100	3	LR 1350
Sommereux	France	Senvion	MM 92	HH 80	6	LR 1350
Tessenderlo	Belgium	Senvion	MM 100	HH 100	2	LR 1350
Tessenderlo	Belgium	Senvion	MM 92	HH 76	3	LR 1350
Tessenderlo	Belgium	Senvion	MM 92	HH 80	2	LR 1350
Mige Escamps	France	Senvion	MM 92	HH 80	7	LR 1350
Moulin de Sehen	France	Senvion	MM 92	HH 80	6	LR 1350
Bois de Ville	France	Senvion	MM92	HH100	3	LR 1600
Evergem	Belgium	Senvion	MM92	HH100	1	LR 1350
Kluizendok	Belgium	Senvion	3.4M	HH100	4	LR 1600
Lummen	Belgium	Senvion	MM100	HH100	3	LR 1600
Boryslawice	Poland	EWB1	Vestas V80	120m	3	CC 2400
Nestlé la Reposte	France	Senvion	MM100	HH80	3	LR 1350
Nestlé la Reposte	France	Senvion	MM100	HH80	3	LR 1350
Saint Caradec	France	Senvion	MM92	HH80	3	LR 1350
Severac	France	Senvion	MM92	HH100	4	CC 2400
Villacerf	France	Senvion	MM100	HH80	5	LR 1350
La Couturelle	France	Senvion	MM92	HH80	9	LTM 1750
PECN2	France	Senvion	MM92	HH80	6	LTM 1750
Cernon 4	France	Senvion	MM92	HH80	7	LR 1350
Alphen	Germany	Senvion	MM92	HH100	1	LR 1350
Brandström	Germany	Senvion	MM100	HH100	1	LR 1350
Düren	Germany	Senvion	MM92	HH80	1	LR 1350
Eschweiler	Germany	Senvion	3.2m	HH123	4	LR 1600
Perles	France	Senvion	MM92	HH80	6	LTM 1750
Dilsen	Belgium	Senvion	MM100	HH100	3	LR 1600
Belare	Belgium	Senvion	MM100	HH100	2	LR 1600
Zandvliet	Belgium	Senvion	3.0M122	HH139	1	LR 1600
Werlte	Germany	Enercon	E101	HH 135	4	LR 1600
Heek	Germany	Senvion	3.4M 122	HH 139	1	LR 1600
Niederzier Stein	Germany	Senvion	3.2M 114	HH 123	1	LR 1600
Tellmer	Germany	Enercon	E101	HH 147	2	LR 1600
herderen	Belgium	Vestas	V117	HH 141,5	3	LR 1600
Burlage	Germany	Enercon	e82	HH 108	5	LR 1600
Perl Buschdorf	Germany	Enercon	E82	HH 149	1	LR 1600
Minderhout	Belgium	Senvion	3.0M122	HH119	1	LR 1600
Utlheben	Germany	Senvion	3.4M 122	HH 143	1	LR 1600
Issum	Germany	Enercon	E115	HH 149	4	LR 1600
Bois Joli	France	Senvion	MM92	HH80	6	LTM 1750
Bray-Tilleul	France	Senvion	MM92	HH80	6	LTM 1750
Meerhout	Belgium	Senvion	3.4M114	HH119	3	LR 1600
NCO Is Sur Tille	France	Envision	EN130 2.3	HH110	16	LR 1600
<b>Total</b>					<b>231</b>	

# SAFETY & QUALITY





# HSEQ DOCUMENTATION

Client: Nordex Page: 1 / 14  
 Site: Example Project no.: AW220010  
 UNLOADING, LIFTING & ASSEMBLY OF WIND TURBINES  
 3x 3,4M / HH119str Contract no.:  
 Rev.: 0 Date: 22/03/2022

**PEINEMANN**  
 RENTAL - SALES - SERVICES

INDIVIDUAL HEALTH AND SAFETY PLAN  
 UNLOADING, LIFTING & ASSEMBLY OF 3 X  
 3,4M / HH 119M Example

REV	DATE	ADAPTATION	DRAFTED	CHECKED	APPROVED	#Pg
220322	FIRST DRAFT		MRV	CM	MH	14



Client: Nordex Page: 15  
 Site: Example Project no.: AW220010  
 UNLOADING, LIFTING & BUILDING OF WIND  
 TURBINES 1x MM100 /100m Revision:  
 Date: 18/03/2022

**PEINEMANN EMERGENCY PROCEDURES**

REV	DATE	ADAPTATION	EDITED	CHECKED	APPROVED	Pg
180322			MRV	MH	SB	5

# ENGINEERING

